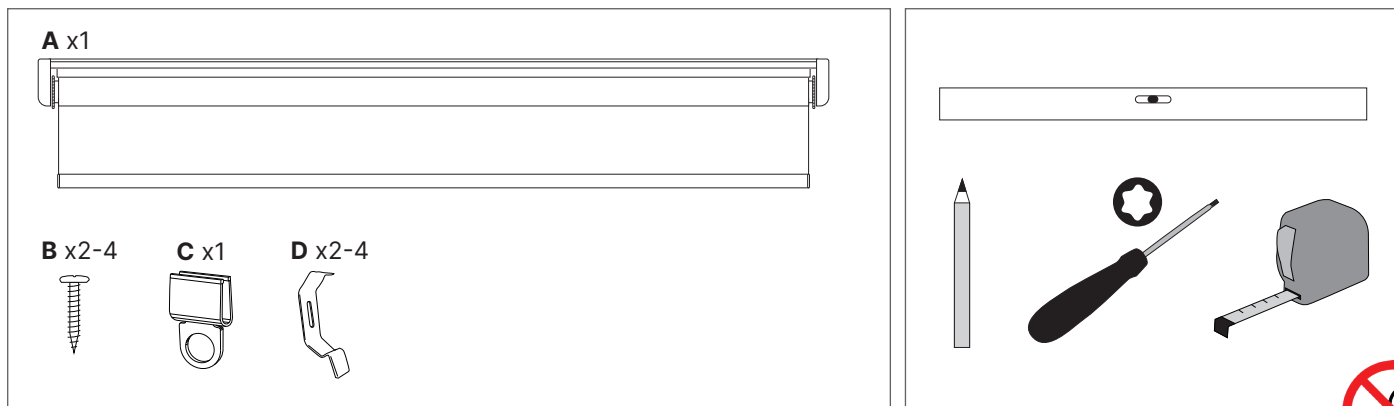


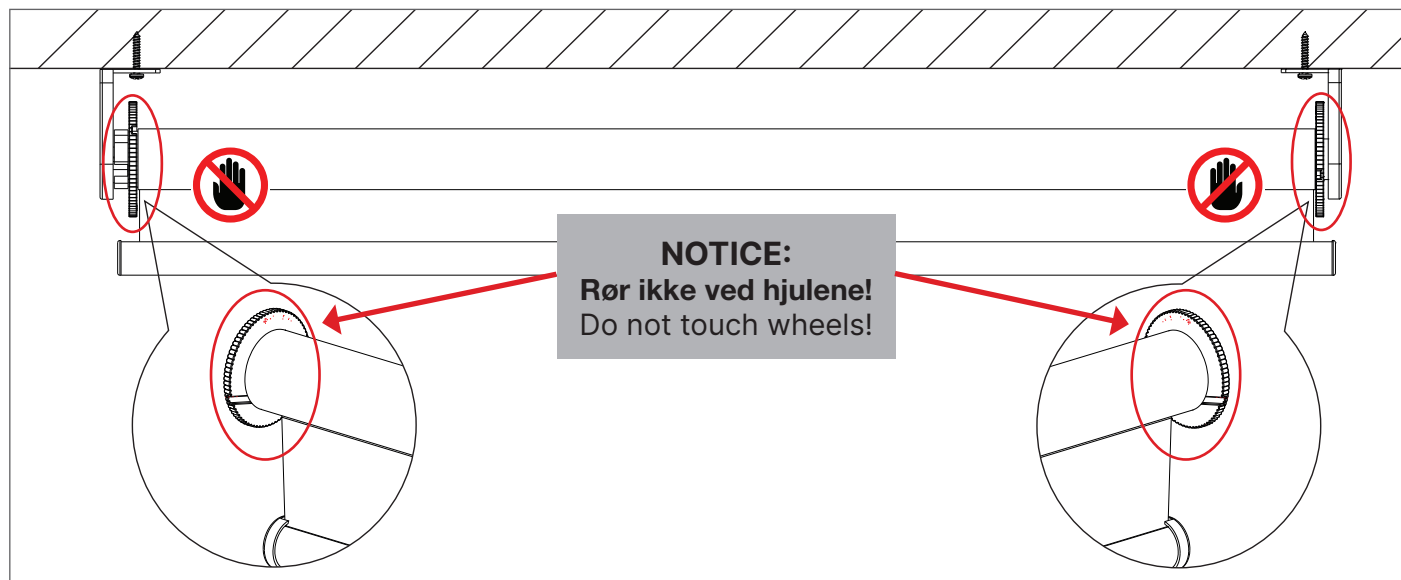
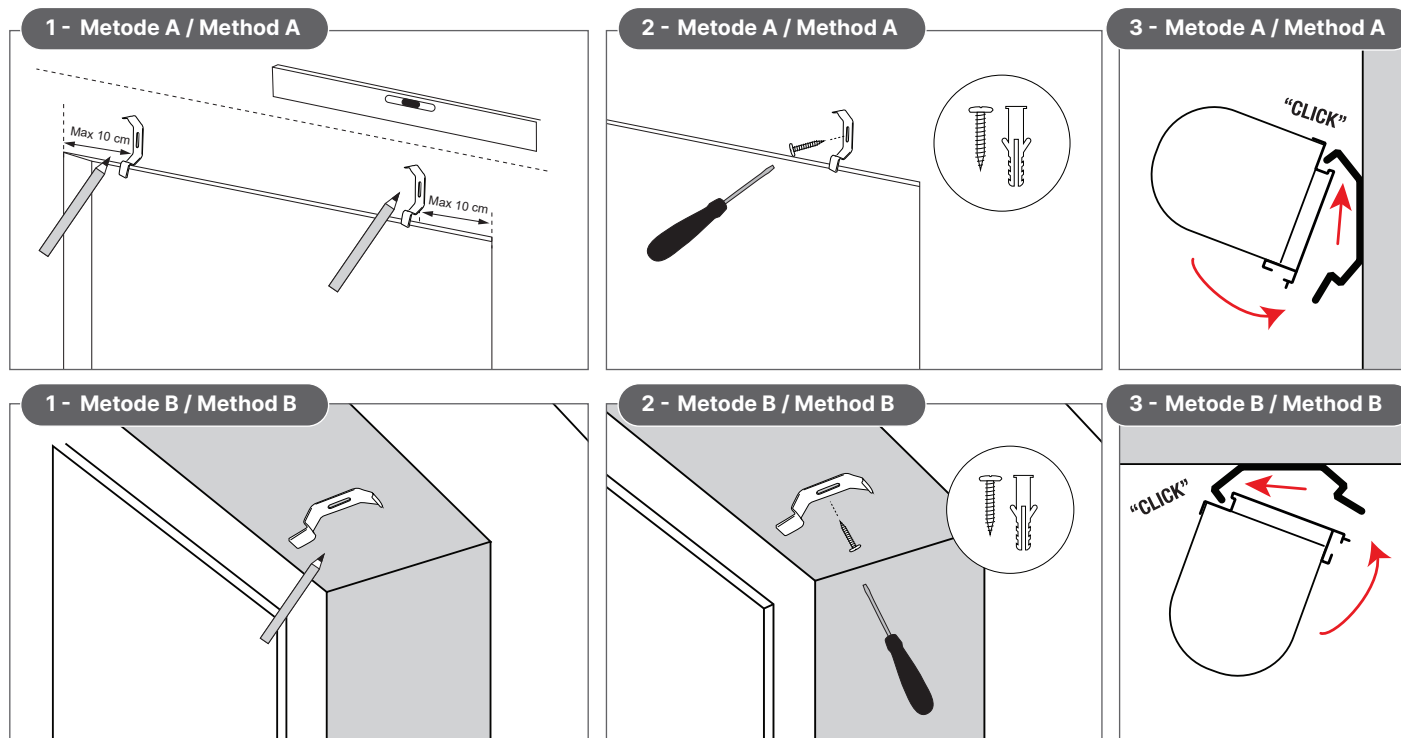


03.2026 - ver.1



VÆLG MONTERINGSMETODE (A ELLER B)

CHOOSE MOUNTING METHOD (A OR B)





03.2026 - ver.1

!

DK: Standard rul → justér i **højre** side
EN: Standard roll → adjust **right** side

DK: Overrul → justér i **venstre** side
EN: Reversed roll → adjust **left** side

1

DK: Tag endedækslet af **EN:** Remove end cap

2

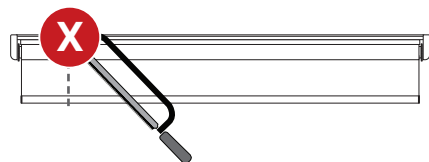
+

DK: Sænk hastighed (brems)
EN: Slow down (brake)

-

DK: Øg hastighed (slæk bremse)
EN: Speed up (release brake)

! **BEMÆRK; GARDINET KAN IKKE AFKORTES**
 PLEASE NOTICE; THIS ROLLER BLIND CANNOT BE SHORTENED



debel.dk

